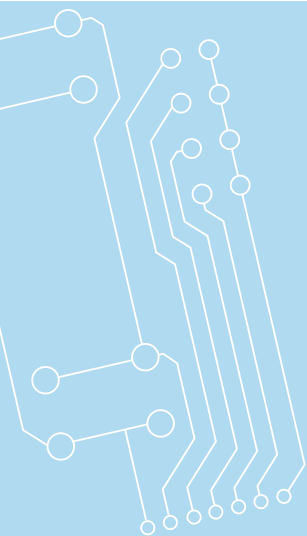


TBI Módulo de Controle Remoto TBI Remote Control Modules

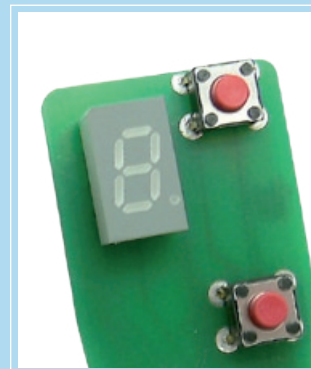


Vantagens e Características








- Para todas as tochas manuais padrão
- Operação Ergonômica
- Disponível em diversas versões
- Conexão rápida ao cabo de controle

Advantages and Features

*For all standard hand-held torches
Ergonomical Operation
Available in many different versions
Quick connection to the control cable*



TBi Módulo de Controle Remoto
TBi Remote Control Module

	<p>FM1 Botão de dupla ação <i>Double action switch (Up / Down)</i></p>		<p>FM5 Potenciômetro Potentiometer Botão de dupla ação (Cima / Baixo) com potenciômetro 10kΩ <i>Double action switch (Up / Down) with potentiometer 10kΩ</i></p>
	<p>FM2 Dois botões de dupla ação <i>Two double action switches (Up / Down)</i></p>		<p>FM6 Display de 4 LEDs Botão de dupla ação (Cima / Baixo) <i>4-LED Display with Double action switch (Up / Down)</i></p>
	<p>FM3 Botão de 4 vias <i>4-way pushbutton</i></p>		<p>FM7 Display de 7 segmentos com botão de dupla ação (Cima / Baixo) <i>7-segment Display with Double action switch (Up / Down)</i></p>
	<p>FM4 Botão de regulagem <i>Spin-wheel poti 10kΩ</i></p>		

Todos os módulos de controle remoto são equipados com conectores JST de 7 ou 12 pólos. Montagem personalizada disponível mediante solicitação.

All remote control modules are equipped with 7- or 12-pole JST-connectors. Custom built modules and bus-systems available on request.

*2009 TBi Industries 0307