



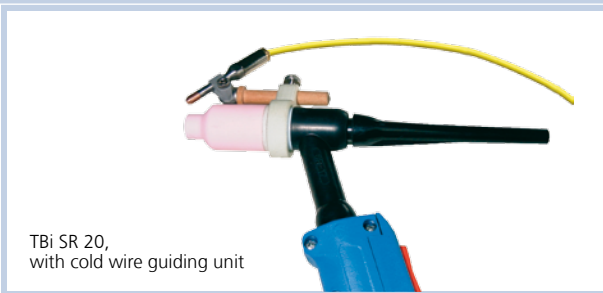
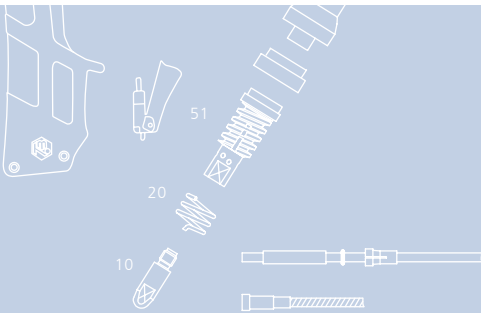
TBi PowerFeeder PF16 Planetary Cold Wire Feeder

- Straightens the wire – for smooth looking welds
- Specially suited for soft wires
- Remote control interface for automation applications

Technical data

TBi PowerFeeder PF16

Application	Automatic cold wire feeding for manual and automated TIG, Plasma and Laser welding
Wire speed (infinitely variable)	0.1 – 7 m/min for TIG / Plasma or 0.2 – 16 m/min for Laser (factory preset)
Wire diameter	0.6 – 1.6 mm with no need to change drive wheels
Precision of wire speed	± 1.0 %
Operation modes	2- and 4-step operation, Intermittent mode: 30 – 200 pulses/min, Wire pull-back: 1 – 10 mm
High voltage resistivity	8000 V
Feeding length	Recommended up to 4 m
Duty cycle	60% (10 min. cycle)
Supply voltage	24 V AC / 8 A, suitable transformer for 220 V included
Dimensions (l x w x h)	approx. 780 x 300 x 470 mm
Weight	approx. 15 kg (without wire spool)



Ordering information

TBi PowerFeeder PF16 **580P090016**

Included in delivery: PF16 with spool holder and carrying handle, transformer 220V/24V, AC-power line 1.5 m, gas hose 1.5 m, welding power cable 50 sqmm, 1.5 m with plug TSP 35/50, 2 water hoses cpl. 1.5 m

Connections and controls

PF16 Front panel

- A EURO torch connection
- B Socket for trigger signal
- C Water connection
- D Interface for remote control (power source on/off, wire feeder on/off, wire speed)
- E Display of wire speed
- F Wire pull-back time (0.1 – 1.5 sec.)
- G Wire speed
- H Operation mode selector
- I Pulse length (0.2 – 7 sec.)
- J Pause length (0.2 – 7 sec.)
- K Selector trigger signal / remote control



PF16 Back panel

- L Supply voltage 24 V and power source on/off signal
- M Gas connection
- N Water connection
- O Power connection
- P Wire run in
- R Fuse
- S Selector for wire diameter



Pos. Description Part. No.

Connection kit

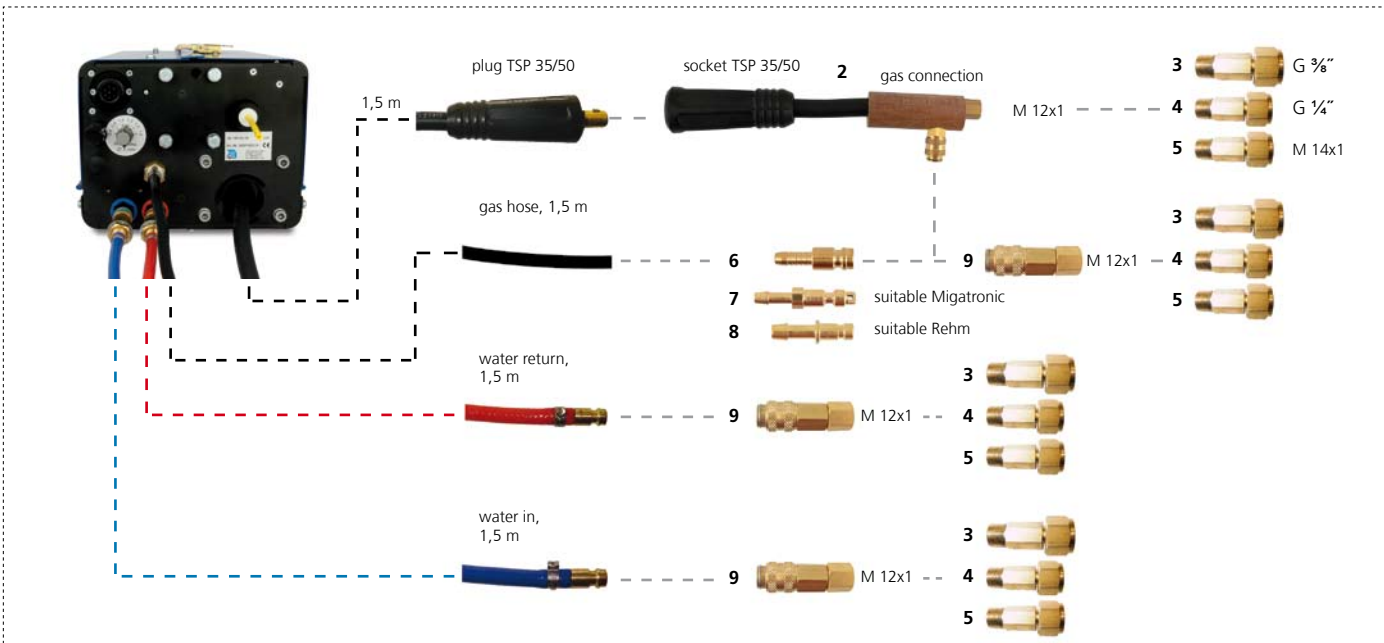
- | Pos. | Description | Part. No. |
|------|---|------------|
| 1 | Kit with 18 adaptors for power, gas and water, for connection to all common power sources | 580P091000 |

Pos. Description Part. No.

Individual parts

- | Pos. | Description | Part. No. |
|------|---|------------|
| 2 | Power adaptor for TIG cold wire feeder, M12x1 | 580P091001 |
| 3 | Adaptor, M12x1, G 3/8" | 580P091150 |
| 4 | Adaptor, M12x1, G 1/4" | 580P091151 |
| 5 | Adaptor, M12x1, M14x1 | 580P091152 |
| 6 | Quick connector, standard | 701P002064 |
| 7 | Quick connector, suitable Migatronik | 701P002099 |
| 8 | Quick connector, suitable Rehm | 956P102001 |
| 9 | Quick disconnect, M12x1 | 701P041125 |

1



© 2006 TBI Industries GmbH. All rights reserved. Subject to change without notice. Warranty only when using original TBI consumables and spare parts. Excerpts and reprints not permitted.
Nr. DOKP171012, 10/2006.

TBI Industries GmbH
Ruhberg 14
D-35463 Fernwald-Steinbach
P.O. Box 67
D-35461 Fernwald-Steinbach

Tel. + 49 6404 9171-0
Fax. + 49 6404 9171-40
Internet: www.tbi-industries.com
E-mail: info@tbi-industries.com